

Windshield Tag (Global)

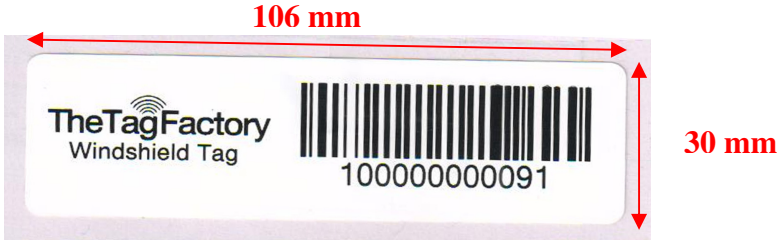
FEATURES

- Windshield tag is a temper evident tag and can be easily attached with self Adhesive tape.
- It is a frequency independent flexible tag and operates effectively with read range of over 10m when attached to inside of vehicle's windshield.
- Unique serial number and the associated barcode are printed at the front of the tag to allow automated processing and easy issuing to end-users.

APPLICATIONS

- Due to global frequency tuning and high read range, It can be used in toll application, vehicle identification throughout the world irrespective of frequency used in country.
- Factory automation, Automotive & Security purpose.

Chip Type:	EPC Class 1 Gen 2; ISO 18000-6C protocol compliant	
	Alien Higgs 3	
	EPC 96 bit extendable up to 480 bits	
	User Memory 512 bit	
	Data retention of 50 years	
	Write endurance 100.000 cycles	
Mechanical:	Dimension	106 x 30 x 0.3 mm
	Material	Flexible polypropylene
	Colour	White
	Weight	1.9 g
Electrical:	Operating Frequency	860 - 960 MHz
	Operating mode	Passive (battery-less transponder)
Ingress Protection:	IP66	
Thermal:	Storage Temp.	-40°C to +85°C
	Operating Temp.	-40°C to +85°C
Part Number:	367V1	
Options:	Available with:	
	Other IC type on request	
	Adhesive backing for easy mounting	



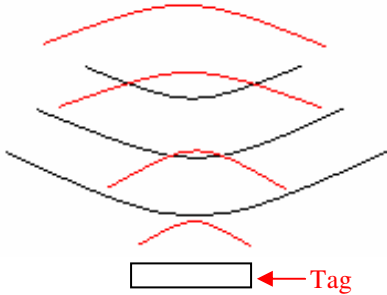
Tag Placement

- ✚ Windshield tag is polarized parallel to the length of the tag.
- ✚ Ensure that there is no hindrance between the tag and the reader antenna.
- ✚ Reader antenna should be parallel to the tag length as shown in below figure:

Correct way



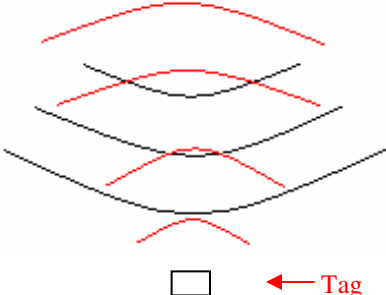
Antenna



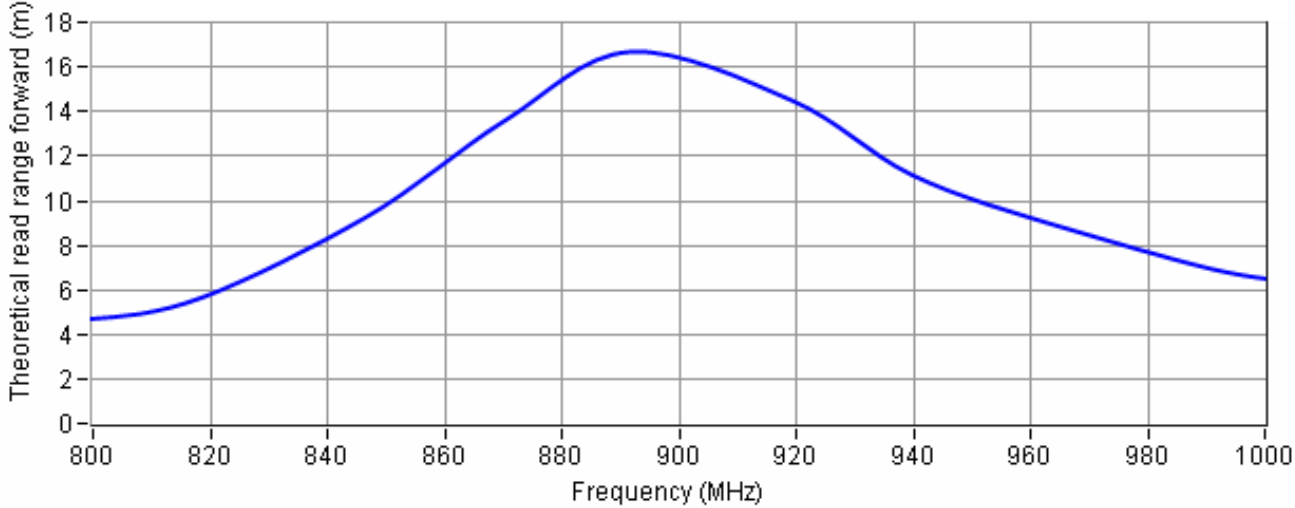
Wrong way



Antenna

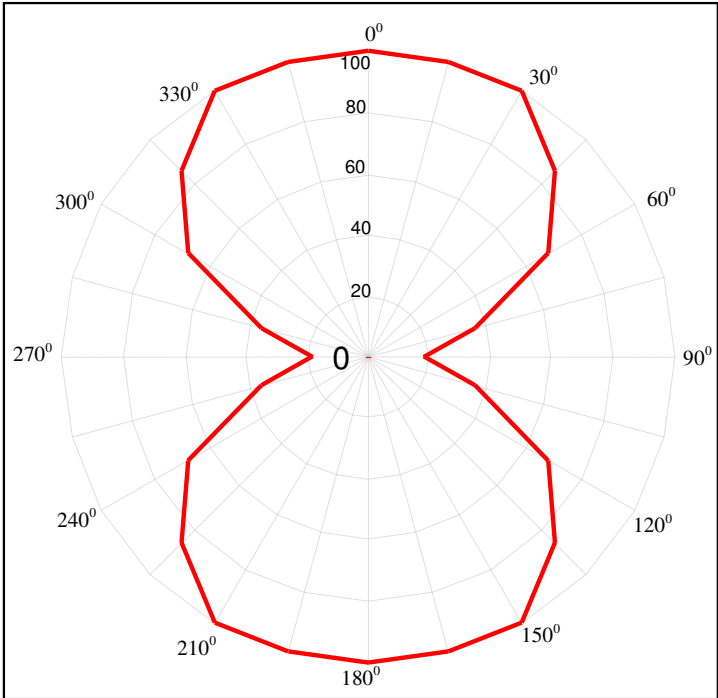


Read Range v/s Frequency



Angular Sensitivity

Windshield Tag Angular Sensitivity (Relative Read Range vs. Orientation)



Read range (in percent) at various angle.

